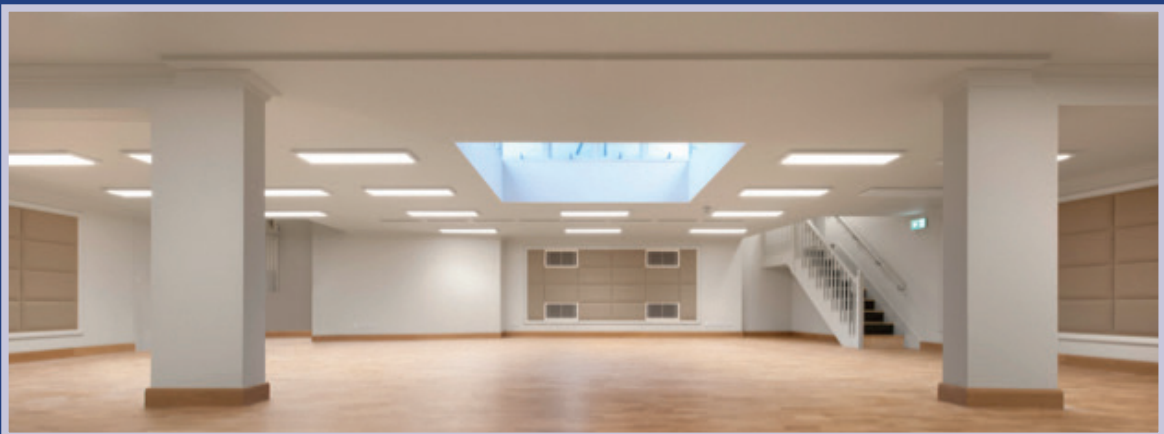
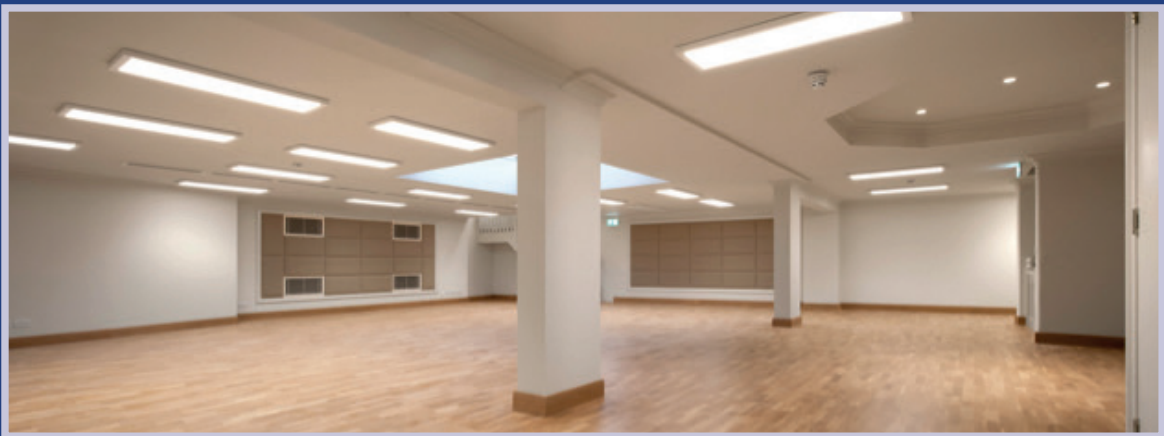


# THE VICTORIA PALACE REHEARSAL ROOM



New space built as part of the Victoria Palace Theatre restoration in 2017

ROOM SPECIFICATIONS: 17m x 17m x 2.2m

**ENTRY THROUGH GRAND CIRCLE BAR DOOR**

W 625mm H 1995mm

**ROOF EXIT DOOR**

W 935mm H 1890mm

**STAIRCASE TO REHEARSAL ROOM**

W 840mm H 1850mm

**EAST WING DOOR**

W 910mm H 1990mm

**STAIRCASE TO ROOF**

W 850mm

**CAPACITY: 50**

Sprung floor surface